

# WHEREFORE ART THOU RETIREMENT?

For nearly four decades from our headquarters in Santa Fe, Thornburg Investment Management has been a recognized leader in fixed income, equity and alternative investing for institutions and financial advisors. Turn your retirement soliloquy into a conversation, and ask your financial advisor about our "Road of Retirement" guide.

We are proud to support the **Santa Fe Botanical Garden**.



IN PARTNERSHIP WITH  
*Santa Fe Botanical Garden*  
*The Shakespeare Guild*

*Santa Fe Classic Theater*  
PRESENTS

## *Romeo & Juliet*



# A Note from the Director

A great script; huge visceral emotions; sweeping poetry and epic street fights. Add a bit of discord that will echo today's cultural and political conflicts. Throw in a brilliant playwright's unique perspective on a society that reverberates with love, hate, and intolerance. With these ingredients, I knew that *Romeo and Juliet* was a perfect choice for this season of Shakespeare in the Garden.

My goal was to provide as intimate and immediate an experience as possible. I wanted the setting to rise organically out of the natural contours of this beautiful amphitheater. I wanted to shrink the distance between performer and audience. I wanted to offer attendees an actor-driven presentation with little reliance on modern technology. But above all, I wanted to tell a good tale.

This production is the result of the ideas and efforts of everyone who's been involved in it: amazing hands-on producers and generous supporters; a wonderful cast and production team; a superb dramaturg; and an associate director who happens to be my loving wife and the best acting coach I know.

We hope you'll find this show as enjoyable to experience as it was for us to prepare.

Patrick Briggs

*This production is dedicated to the memory of Michael Graves.*

Enjoy Shakespeare  
all summer long,  
up close and personal!

See a play:

*Romeo & Juliet*

*The Comedy of Errors*

*Measure for Measure*

*1 Henry the Fourth*

Learn to wield a sword

Edit Shakespeare

Read a play—out loud  
and in community

Learn an Elizabethan dance

Take a closer look at  
Shakespeare's language

Talk with directors & actors

Watch a rehearsal

Draw Shakespearean models

And more!



**Santa Fe Summer Shakespeare  
programming created by:**

International Shakespeare Center  
Santa Fe Classic Theater  
Upstart Crows of Santa Fe  
New Mexico Actors Lab  
Theatre Santa Fe  
Theatre Lovers Club  
A Gallery Somewhere  
Cadets de Gascon  
iReadShakespeare  
Shakespeare Close Readers

[www.SFSummerShakes.org](http://www.SFSummerShakes.org)

# Acknowledgments

*We're immensely grateful to everyone who has supported this year's production. We call them Bardtenders - because whether they're providing monetary assistance or contributing various types of in-kind help, they're doing their part to make the Bard feel at home in the Garden's unique setting. For more about this indispensable society, visit <https://shakesguild.org/Bardtenders.pdf>.*

*We are very grateful to **Thornburg Investment Management**,  
our Corporate Sponsor.*

*We're equally grateful to those individuals who've  
contributed at the levels below.*

## **Sponsor**

Linda Krull

## **Patron**

Joel Goldfrank

Thomas and Carolyn Kiernan

## **Benefactor**

Don and Barbara Burnett

Stephanie Duran

Ernest and Jane Godlove

Johanne Ibsen

Juli King

Susan Cedar and Gary Lowenthal

Deborah Kirsch

## **Donor**

Clayton and Hester Bass

Letitia Chambers

George Duncan

Jo Franzen

Anne Gallagher

Susan Howard and Vince Pigott

Quinn and Sheridan Mander

## **Contributor**

Tom Applequist and Charles Newman, Nancy Armstrong,

John Heiges Blythe, Pamela Lee Cranston,

Patrick Carr and Robert Roach, Doreen Dunn, Jane Goe,

Meg Hachmann and Bill Hutchinson, Eric Ibsen,

Lucia Kavanaugh, Maurice and Virginia Lierz,

Rhea Maxwell, Elizabeth Reed, Larry and Nyla Rasmussen,

Coletta Reid and Pat Hastings, Ruth B. Preucel, Mari Rovang,

Sharon Stewart, Nancy Witter

## **Subscriber**

Alexander Davis, Steve and Dale Dunn, Patricia Flasch,

Nora Kay Foster, Rebecca Jensen, David Joseph,

Rebecca Lee, Douglas Raymond

## **Friend**

Evelyn Carriere, Aline Fournier, Mary Frei, Penelope Gall,

Bill Hultquist, John Ibsen, William Ibsen,

Sheila Nixon and Roland Richter, Alaina Zachary

*We're also grateful for the generous in-kind support  
we've received from*

Robert Benedetti - New Mexico Actors Lab

Joey Chavez and Barbara Hatch - NMSA

Santa Fe Art Institute

Brad Fairbanks - Santa Fe Prep

A very special thank you to Lindsay Taylor, Rebecca Jensen,  
George Jones, Clayton Bass, and the entire Botanical Garden staff.



**NEW MEXICO ACTORS LAB**

**2019 SEASON CONTINUES TO AUGUST 25!**

at Teatro Paraguas - Thurs-Sat at 7:30 pm; Sundays at 2 pm



**JUNE 6-23 NO MAN'S LAND by Harold Pinter**

**JULY 11-28 STOP KISS by Diana Son**

**AUGUST 8-25 4000 MILES by Amy Herzog**

**WWW.NMACTORSLAB.COM OR 505-424-1601**



# Production Staff



**JOHN F. ANDREWS, Dramaturg.** An author, editor, and educator, John presides over The Shakespeare Guild, which hosts *Speaking of Shakespeare* dialogues in Manhattan and presents the *Gielgud Award for Excellence in the Dramatic Arts*, a trophy that is now bestowed each October in London's historic Guildhall. Recipients include Judi Dench, David Hare, Derek Jacobi, Kevin Kline, Ian McKellen, Vanessa Redgrave, and Patrick Stewart.



**KELLY KIERNAN, Associate Director.** Kelly holds a BFA in Theatre Arts, and is a member of Actors Equity Association. She studied Shakespeare with John Barton of the Royal Shakespeare Company, and Chekhov with Professor Murray Biggs of Yale University. Her regional credits include work at The American Shakespeare Theater, Connecticut Free Shakespeare, Orlando Shakespeare Festival, and Shakespeare in Santa Fe.



**SUZANNE CROSS, Stage Manager.** Since the 1970's, Suzanne has been active in theater from Louisiana to North Carolina. She has stage-managed 17 productions in Santa Fe since 2015, working with New Mexico Actors Lab, Santa Fe Playhouse, ISC, Oasis Theater, and other companies. She is a founding member of Santa Fe Classic Theater.



**JASMINKA JESIC, Costume Designer.** A native of Yugoslavia, Jasminka has done distinguished work in both film and theater. Her local clients have included Theaterwork, Santa Fe Stages, Shakespeare in Santa Fe, Theater Grottesco, Stray Dogs, and the College of Santa Fe. She's taught at Santa Fe Community College and at Santa Fe University of Art and Design. She has also collaborated with a number of prestigious fashion studios, both in northern New Mexico and elsewhere.



**MEG HACHMANN, Assistant Costumer.** A sculptor and painter, Meg has enjoyed a lengthy career in the theater as an actor, director, set designer, costumer, and stage manager. She started out in New York City, working with Bill Baird's Puppet Theater, then moved to Oregon, directing and managing The Peppercorn Players, a traveling troupe. Locally, she has worked with Santa Fe Classic Theater, Santa Fe Opera, Santa Fe Playhouse, Santa Fe Stages, Shakespeare in Santa Fe, Theaterwork, and Teatro Paraguas.



**JENNIFER GRAVES, Marketing Director.** Jennifer's career in regional theater, and in TV in New York City, included Shakespearean roles such as Kate in *The Taming of the Shrew* and Katherine of Aragon in *Henry VIII*. She has performed at most of the theatres in Santa Fe. In 2017, she portrayed Lady Gonzala in *The Tempest* at the Santa Fe Botanical Garden.



**LYNN ROYLANCE, Photography & Graphic Design.** Lynn holds a BFA from the California Institute of the Arts. He has shown at the Los Angeles County Museum of Art, the San Angelo Museum of Fine Arts, and galleries in Los Angeles, Santa Fe, New York, and Texas. His work has been seen in publications such as *Pasatiempo*, *Santa Fe New Mexican*, *Albuquerque Journal North*, and *Inspired Eye*. Lynn currently photographs plays for New Mexico Actors Lab, Santa Fe Playhouse, and Upstart Crows, among others.

# Romeo & Juliet

Produced by Santa Fe Classic Theater

Presented in partnership with  
Santa Fe Botanical Garden and  
The Shakespeare Guild

May 31-June 9, 2019

## Cast

MILES BLITCH.....Prince Escalus  
ALYSSA BONANNO.....Juliet  
*Sponsored by Johanne Ibsen*  
KEN BORDNER.....Mountague  
EVAN DALZELL.....Gregory / Friar John  
ERIC DEVLIN.....Capulet  
JOSH DANNENBERG.....Sampson / Servant  
LISA FOSTER.....Capulet's Wife  
CORLINA KIERNAN.....Peter / Servant  
*Sponsored by Thornburg Investment Management*  
ABRAM KLAASSEN.....Abraham / Servant  
*Sponsored by Quinn Mander and Sheridan Johnson*  
NICHOLAS KOHNEN.....Friar Lawrence  
MARY BETH LINDSEY.....Nurse  
*Sponsored by Stephanie Duran of Barker Realty*  
TYLER NUNEZ.....Tybalt  
EMILY RANKIN.....Benvolio  
ANN ROYLANCE.....Chorus / Apothecary  
BEAR SCHACHT.....Paris  
NOAH SEGARD.....Romeo  
*Sponsored by Tom and Carolyn Kiernan*  
HANIA STOCKER.....Mercutio  
*Sponsored by Juli King of Barker Realty*

## Production Staff

Director.....Patrick Briggs  
Fight Director.....Ambrose Ferber  
Associate Director.....Kelly Kiernan  
Costume Design & Construction.....Jasminka Jesic  
*Sponsored by Deborah Kirsch*  
Costumer Assistant.....Meg Hachmann  
Set & Light Design.....Patrick Briggs  
Fight Captain.....Corlina Kiernan  
Stage Manager.....Suzanne Cross  
House Manager.....Deborah Hayden  
Marketing Director.....Jennifer Graves  
Photography & Graphic Design.....Lynn Roylance  
Production Interns.....Alison Garcia, Ben Klaassen  
*Sponsored by Thornburg Investment Management & George Duncan*  
Cover Art.....Simona Rael  
*New Mexico School for the Arts Intern  
Sponsored by Clayton & Hestor Bass*

*We say goodbye to Jasminka Jesic, our fabulous costumer, who retires this year. She makes trash into treasures. Thank you for lending us your amazing talent, Mina.*

# Actors



**MILES BLITCH, Prince Escalus.** Miles made his local debut last fall in ISC Santa Fe's *King Lear*, followed by a role in Oasis Theatre's *The Winter's Tale*. He recently starred in Teatro Paraguas' *El Coquí Espectacular and the Bottle of Doom*.



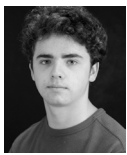
**ALYSSA BONANNO, Juliet.** Alyssa is appearing not only in her first Santa Fe production but in her first Shakespearean role. She has played Amalia in *She Loves Me*, Sherrie in *Rock of Ages*, and Nina in *In the Heights*.



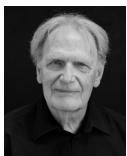
**KEN BORDNER, Mountague.** Ken started performing at age 5 as an "Unborn Soul" in Miss Perkins' Charm School. Seven decades later, after periods as a theater professor, a professional actor, and an Episcopal priest, he is delighted to be back on stage in this summer's *Romeo and Juliet*.



**EVAN DALZELL, Gregory / Friar John.** Evan's credits include the title role in *Trevor* at Santa Fe Playhouse, Tom in *Bengal Tiger at the Baghdad Zoo* at Mad Horse Theatre, and Leonard Ganz in *Rumors* at the Guelph Student Theatre.



**JOSH DANNENBERG, Sampson / Servant.** Josh is a current senior at New Mexico School for the Arts. His credits include *You Can't Take it With You*, *Macbeth*, *Anna Still Dancing*, and *Image is Everything*. He also helps build sets and props for Pandemonium Productions.



**ERIC DEVLIN, Capulet.** A native of New York City, and a recent transplant from Texas, Eric has performed in thirteen shows at Shakespeare Dallas. Among the roles he has most enjoyed are Mr. Hardcastle in *She Stoops to Conquer*, Camillo in *The Winter's Tale*, and Egeon in *The Comedy of Errors*. He sends his love to Amber.



**LISA FOSTER, Capulet's Wife.** Lisa trained in New York with Uta Hagen and Carol Rosenfeld and Gately-Poole Studios. Her Shakespearean roles have included Olivia in *Twelfth Night*, Goneril in *King Lear*, and Isabella in *Measure for Measure*.



**CORLINA KIERNAN, Peter / Servant.** A recent graduate of Flagler College in Florida, Corlina is certified in Stage Combat, a skill she's applying while she plays two roles in this year's presentation of *Romeo and Juliet*.



**ABRAM KLAASSEN, Abraham / Servant.** Born to play this role, Abram is studying drama at Santa Fe Community College and stage-managing productions at the Santa Fe Playhouse. He recently depicted the clownish son of the Shepherdess in Oasis Theatre Company's production of *The Winter's Tale*.



**NICHOLAS KOHNEN, Friar Lawrence.** Nicholas appeared as an ensemble cast member in a recent production of *The Curious Incident of the Dog in the Night* at Santa Fe Playhouse.



**MARY BETH LINDSEY, Nurse.** A multifaceted performer, Mary Beth hosts local variety shows as MC LinZ. She recently appeared as Olympe de Gouges in Adobe Rose Theatre's production of *The Revolutionists*.



**TYLER NUNEZ, Tybalt.** A graduate of Santa Fe University of Art and Design, Tyler played Bo in the Adobe Rose production of *Bus Stop*. He has also appeared in the Santa Fe Playhouse productions of *Flight Plan* and *Perfect Love*.



**EMILY RANKIN, Benvolio.** Emily is an actor, director, and visual artist who recently relocated to Santa Fe from Austin, Texas. With two decades experience in film and theater, she is now involved in various aspects of Meow Wolf's House of Eternal Return.



**ANN ROYLANCE, Chorus / Apothecary.** A Dramalogue Award winner, Ann has worked in TV, theatre, and clubs, with such notables as Mary Tyler Moore, Harold Prince, and Stephen Sondheim. Locally she has performed with New Mexico Actors Lab, Santa Fe Playhouse, Adobe Rose, and Santa Fe Shakespeare Society.



**BEAR SCHACHT, Paris.** Bear is excited to be back for a second summer of Shakespeare in Santa Fe. Prior to portraying Mustardseed in *A Midsummer Night's Dream*, he had performed in *Guys and Dolls*, *Bye Bye Birdie*, *The Fantasticks*, and *Footloose*. His other hobby is singing with the Santa Fe Harmonizers barbershop chorus.



**NOAH SEGARD, Romeo.** Noah's credits include *Much Ado About Nothing* and *A Midsummer Night's Dream* with Santa Fe Shakespeare Society, *The Winter's Tale* with Oasis Theatre, and *King Lear* with the ISC Repertory Company. He will play Prince Hal in ISC's upcoming productions of *Henry IV* and *Measure for Measure*. He sends his love to Zoe, the pups, and his family.



**HANIA STOCKER, Mercutio.** Hania grew up surrounded by the theater, observing his parents in rehearsal, watching countless productions, attending workshops, and performing in plays. An alumnus of St. John's College, Hania lives in Santa Fe, where he is co-owner of Northern New Mexico Gardens.



**PATRICK BRIGGS, Director.** A complete theater professional, Patrick spent several years at The American Shakespeare Theater in Stratford, Connecticut, honing his skills not only as a performer but as a designer and producer. For last year's *A Midsummer Night's Dream*, Patrick served both as Production Manager and as an actor, playing Egeus and Peter Quince. In 2014, Patrick directed *Macbeth* at Santa Fe Playhouse.



**AMBROSE FERBER, Fight Director.** Ambrose first swung steel as Douglas in *Henry IV, Part 1* and has served as the fight director for many shows, including *Les Misérables*, *Cyrano*, *Extremities*, *Pillowman*, *Macbeth*, and *King Lear*. He works as an actor combatant, fight director, teacher, and trainer throughout the Southwest.