

SALUTING THE CLASSICAL TRADITION IN DRAMA

ILLUMINATING PRESENTATIONS BY
The Shakespeare Guild

IN COLLABORATION WITH
The National Arts Club

The Corcoran Gallery of Art

The English-Speaking Union

The Royal Shakespeare Company



ADAM GOPNIK ♦ Monday, October 17

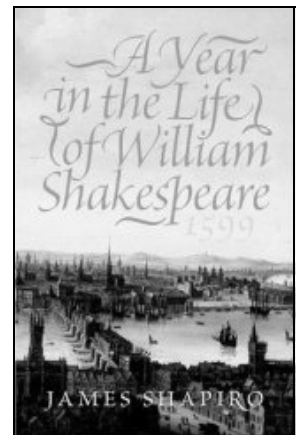
The witty author who charmed us with *Paris to the Moon*, his best-selling account of the years that he and his family spent in the City of Light, has now produced a second sequel to that volume. Last October ADAM GOPNIK joined us to chat about *Americans in Paris: A Literary Anthology*, his compilation of observations by New World visitors who've fallen in love with the storied French capital. He has now completed *The King in the Window*, an evocative novel about a lonely U.S. schoolboy and the illuminating adventures that ensue from an epiphany he experiences when he sees his image reflected in a magic pane of glass. Mr. Gopnik will discuss and sign copies of his latest book. As in 2004, meanwhile, he and interviewer JOHN ANDREWS will go on to delve into Mr. Gopnik's other interests, among them the insights he brings to Shakespeare, both as an award-winning *New Yorker* journalist and as a discerning theatrelover who took part in the Guild's 2002 *GIELGUD* festivities for Kevin Kline.

NATIONAL ARTS CLUB
15 Gramercy Park South
Manhattan
Program 7:30 p.m.
MEMBERS \$25, OTHERS \$30

JAMES SHAPIRO ♦ Tuesday, November 15

One of the most popular lecturers at Columbia University, JAMES SHAPIRO is familiar to many readers for his articles in the *New York Times Book Review*. He is also admired for such influential books as *Shakespeare and the Jews*, *Rival Playwrights: Marlowe, Jonson, Shakespeare*, and *Oberammergau: The Troubling Story of the World's Most Famous Passion Play*. His latest publication, *A Year in the Life of*

William Shakespeare: 1599, is destined to reach an even wider audience. Focusing upon the pivotal months in which London's foremost acting company moved into its new home at the Globe, a period when its most prolific dramatist was completing such remarkable works as *Henry V*, *Julius Caesar*, *As You Like It*, and *Hamlet*, Professor Shapiro draws upon extensive sources to show how a dizzying array of political, social, economic, cultural, and religious currents converged in an astonishing poet's fertile imagination. Copies will be available for purchase and inscription.



NATIONAL ARTS CLUB
15 Gramercy Park South
Manhattan
Program 7:30 p.m.
MEMBERS \$25, OTHERS \$30



KITTY CARLISLE HART ♦ Monday, December 5

We urge you to register early for a special salute to one of the icons of American entertainment. For twenty years KITTY CARLISLE HART charmed us as a panelist for TV's *To Tell the Truth*. Her work as a singer and as an actress has included roles in feature films (with stars like Bing Crosby and the Marx Brothers), on Broadway, at the Metropolitan Opera, and at Feinstein's, a Manhattan cabaret in which she celebrated her 95th birthday in September with a series of memorable vocal performances. During a dialogue with JOHN ANDREWS, Mrs. Hart will recall some highlights of a career that has featured Decca recordings of lyrics by Jerome Kern, marriage to playwright Moss Hart, a cameo in Woody Allen's *Radio Days*, and two decades as chairman of the New York State Council on the Arts. One of the treats in store for what promises to be an unforgettable conversation will be a song to conclude the proceedings, with Mrs. Hart to be accompanied by Washington pianist JOHN EATON.

CORCORAN GALLERY
500 17th Street NW
Washington
Program 7:00 p.m.
MEMBERS \$25, OTHERS \$30

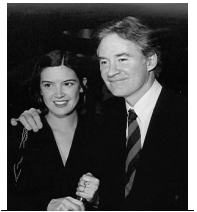


Join the Guild, and Greet the Stars EVENTS IN LONDON, NEW YORK, AND WASHINGTON

If you attended *A SHAKESPEAREAN REVEL AT LINCOLN CENTER* three Junes back, you relished such personalities as actors JOHN CLEESE, KITTY CARLISLE HART, DANA IVEY, and TONY RANDALL, writer ADAM GOPNIK, and directors BARRY EDELSTEIN, BERNARD GERSTEN, and MARGOT HARLEY in a toast to KEVIN KLINE as the 2002 recipient of the *SIR JOHN GIELGUD AWARD FOR EX-*

CELLENCE IN THE DRAMATIC ARTS.

It proved to be a joyous occasion, but like its predecessors, and like its sequel a year later with LYNN REDGRAVE as *GIELGUD* laureate and with her brother CORIN and her sister VANESSA as presenters at the NATIONAL ARTS CLUB, it was also substantive, with unforgettable remarks not only about the honoree's achievements but about the heritage those accomplishments illustrate. In this respect it called to mind a May 1999



GIELGUD presentation at Broadway's BARRYMORE THEATRE, where ZOE CALDWELL, who'd won the 1998 *GOLDEN QUILL* at the FOLGER SHAKESPEARE LIBRARY, led an eminent parade of theatrical celebrities – actors KEITH BAXTER, BRIAN BEDFORD, HAL HOLBROOK, RONALD PICKUP, CHRISTOPHER PLUMMER, and TOBY STEPHENS, playwright Sir DAVID HARE, director Sir RICHARD EYRE, *Masterpiece Theatre* producer REBECCA EATON, and news host ROBERT MACNEIL – in a sparkling *TRIBUTE TO "HER MAJESTY THE QUEEN,"* Dame JUDI DENCH, who had just received an Academy Award as Elizabeth I in *Shakespeare in Love* and was en route to a Tony as Esmé in David Hare's *Amy's View*. A few months later Dame JUDI



and another *GIELGUD* honoree, Sir DEREK JACOBI, were among the hosts for a January 2000 presentation of the trophy to performer, director, and filmmaker KENNETH BRANAGH in London's historic MIDDLE TEMPLE HALL. This Bardic *SALUTE TO "THE MAN OF THE MILLENNIUM"* featured vignettes by U.S. Ambassador PHILIP LADER, composer PATRICK DOYLE, and actors SAMANTHA BOND, RICHARD BRIERS, HELENA BONHAM CARTER, RICHARD CLIFFORD, BEN ELTON, STEPHEN FRY, BOB HOSKINS, GERALDINE MCEWAN, and TIMOTHY SPALL.

On April 19, 2004, in the London theatre that had been renamed for Sir John in 1994, a few months after *THE SHAKESPEARE GUILD* unveiled a gleaming JOHN SAFER trophy to perpetuate a great actor's legacy "with golden quill" (Sonnet 85), the Guild joined hands with the ROYAL SHAKESPEARE COMPANY and the ROYAL ACADEMY OF DRAMATIC ART for a gala celebration of the centenary of Sir John's birth. In an evening that was hosted by BBC personality NED SHERRIN, playwrights ALAN BENNETT and Sir DAVID HARE, director Sir PETER HALL, and actors Dame JUDI DENCH, CLIVE FRANCIS, ROSEMARY HARRIS, MARTIN JARVIS, BARBARA JEFFORD, BARBARA LEIGH-HUNT, Sir IAN MCKELLEN, MICHAEL PENNINGTON, RONALD PICKUP, PAUL SCOFIELD, and Sir DONALD SINDEN commended their late-departed friend.

In recent years, through events in locales such as the BRITISH EMBASSY and the NATIONAL PRESS CLUB in America's capital, the CHICAGO SHAKESPEARE THEATER in Illinois, and the ALGONQUIN HOTEL and the NATIONAL ARTS CLUB in New York, Guild constituents have chatted with actors F. MURRAY ABRAHAM, JANE ALEXANDER, SIMON RUSSELL BEALE, RICHARD EASTON, HENRY GOODMAN, BILL IRWIN, MICHAEL LEARNED, ROGER REES, MARIAN SELDES, PATRICK STEWART, and MICHAEL YORK, directors BILL ALEXANDER, PETER BROOK, MICHAEL KAHN, and ROBERT WHITEHEAD, media leaders COKIE ROBERTS, SUSAN STAMBERG, and LINDA WERTHEIMER, and writers Sir HAROLD EVANS, GEORGE GARRETT, ADAM GOPNIK, STEPHEN GREENBLATT, ANTHONY HECHT, KEN LUDWIG, PETER MARKS, JUDITH MARTIN, DEBORAH TANNEN, and GARRY WILLS. Guild constituents are entitled to member prices at all *SPEAKING* engagements. In addition, those who affiliate with us as SUBSCRIBERS will receive 15% discounts on tickets for our next *GIELGUD* gala. CONTRIBUTORS enjoy 20% discounts on *GIELGUD* tickets. DONORS save 25%, and BENEFACTORS 30%. PATRONS receive 4 prime tickets free, and 35% reductions on further tickets. SUSTAINERS receive 10 prime tickets free, and 40% reductions on additional tickets. Members of the GOLDEN QUILL CIRCLE enjoy 20 prime tickets, and 50% reductions on additional tickets. Any payments that are not offset by benefits claimed are fully tax-deductible.

I wish ___ to make a fully tax-deductible donation, or ___ to enroll as a Guild member for a year in the ___SUBSCRIBER (\$50), ___CONTRIBUTOR (\$125), ___DONOR (\$250), ___BENEFACTOR (\$500), ___PATRON (\$1,000), ___SUSTAINER (\$2,500), or ___GOLDEN QUILL CIRCLE (\$5,000) category. I'd like to reserve ___space(s) ___at \$25*, ___at \$30 for Oct. 17. I'd like to reserve ___space(s) ___at \$25*, ___at \$30, for Nov. 15. I'd like to reserve ___space(s) ___at \$25*, ___at \$30, for Dec. 5. I enclose a check for \$_____. Please charge \$_____ to ___American Express ___MasterCard ___Visa account _____(____/____).

Name _____

Address _____

City, State, Zip _____

Phone, Fax, E-Mail _____

**I belong to _____, identified at the top of the front page as an organization that helps sustain these activities.*



Presenter of *THE GOLDEN QUILL*
The Sir John Gielgud Award for Excellence in the Dramatic Arts

2141 WYOMING AVENUE NW, SUITE 41 John F. Andrews, President
WASHINGTON, DC 20008-3916
Phone & Fax (202) 234-4602, 234-4639 E-Mail shakesguild@msn.com

Founded in 1987 and operational since 1994, The Shakespeare Guild is a global nonprofit corporation that celebrates, and endeavors to cultivate larger and more appreciative audiences for, the dramatist who has been applauded in one society after another as our most reliable guide to the mileposts of life.