

SALUTING THE CLASSICAL TRADITION IN DRAMA

UPCOMING PRESENTATIONS BY
The Shakespeare Guild
IN COLLABORATION WITH
The English-Speaking Union
The Royal Shakespeare Company
The Royal Academy of Dramatic Art
The Woman's National Democratic Club



BILL ALEXANDER ♦ Monday, March 15

BILL ALEXANDER, who is putting the finishing touches on the second half of a memorable staging of *Henry IV, Parts 1 and 2*, for THE SHAKESPEARE THEATRE, will soon be returning to Stratford-upon-Avon, the setting in which he's done much of his work since 1977 as one of the most versatile and successful directors for the ROYAL SHAKESPEARE COMPANY. There he'll begin rehearsals for a much-anticipated *King Lear* with Corin Redgrave in the title part.



WOMAN'S NATIONAL DEMOCRATIC CLUB

1526 New Hampshire NW

Dinner 6:15
Program 7:00

MEMBERS \$30
NON-MEMBERS \$35
PROGRAM ONLY \$15

Mr. Alexander achieved renown for a rendering of *Richard III* that catapulted Antony Sher to stardom in 1984. His triumphs since then include two other RSC productions with Sir Antony, Molière's *Tartuffe* and Shakespeare's *The Merchant of Venice*. Meanwhile he's given us *A Midsummer Night's Dream* with Janet McTeer and Pete Postlethwaite, *The Merry Wives of Windsor*, with Nicky Henson and Lindsay Duncan taking the leads in a show that garnered its director an OLIVIER AWARD, *Much Ado About Nothing* with Roger Allam and Susan Fleetwood, and *The Taming of the Shrew* with Amanda Harris and Anton Lesser. In the autumn of 2003 Mr. Alexander directed a *Titus Andronicus* for the RSC which *The Daily Telegraph* described as "gripping" and *The Guardian* praised for its "somber subfusc dignity." His 1992 *Troilus and Cressida* for THE SHAKESPEARE THEATRE earned critical plaudits and endeared him to a cast that responded enthusiastically to the clarity of his artistic vision.

We're delighted to note that this gathering will be co-sponsored by ROYAL SHAKESPEARE COMPANY AMERICA, and we extend particular thanks to Priscilla Bratcher, its Executive Director, and to Freddi Lipstein, its Office Administrator.

A TRIBUTE TO SIR JOHN ♦ Monday, April 19



JUDI DENCH and PAUL SCOFIELD are only two of the stars you'll see and hear if you help us commemorate the centenary of a man who was widely regarded as the most influential dramatic artist of his era. Between Wednesday, April 14, when Gielgud admirers convene at London's NATIONAL THEATRE to mark the late actor's 100th birthday with readings from his collected letters, and Friday, April 23, when his achievements will be celebrated during the SHAKESPEARE BIRTHPLACE TRUST's Stratford salute to the playwright's 440th anniversary, you'll have a chance to view special exhibits, tour rarely visited sites, and attend prestigious receptions. Highlighting the festivities will be a scintillating revel in the West End – to be co-hosted by the GUILD, RADA, and the RSC – in the venue

that was renamed for Gielgud in 1994. To reserve through the Guild, consult the order form in back. To arrange your own excursion package, log onto WorldTravelService.com or call Teresa Zotikos at (202) 293-9273.

THE GIELGUD THEATRE
Shaftesbury Avenue
London

Curtain 7:30 p.m.

PRIME TICKETS FOR \$150
OTHERS FROM \$40 TO \$110

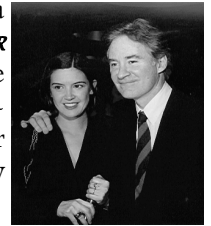


Savoring a Season to Remember

JOIN US IN WASHINGTON, NEW YORK, AND LONDON

If you attended *A SHAKESPEAREAN REVEL AT LINCOLN CENTER* two Junes back, you relished such personalities as actors JOHN CLEESE, KITTY CARLISLE HART, DANA IVEY, and TONY RANDALL, writer ADAM GOPNIK, and directors BARRY EDELSTEIN, BERNARD GERSTEN, and MARGOT HARLEY in a toast to KEVIN KLINE as the 2002 recipient of the *SIR JOHN GIELGUD AWARD FOR*

EXCELLENCE IN THE DRAMATIC ARTS. In addition to the luminaries who appeared in person, several who couldn't be on hand for the event sent greetings, among them KENNETH BRANAGH, who recalled that he'd "had the great pleasure of acting with Mr. Kline on two occasions, once as a legless megalomaniac and once as a cartoon," and Sir DEREK JACOBI, who commended the awardee as a man who "lends a true grace to our profession with his very special gifts." One message came from a redoubtable producer who signed himself "Prince Hal – oops, HAL PRINCE."



It proved to be a joyous occasion, but like its predecessors, and like its sequel a year later with LYNN REDGRAVE as *GIELGUD* laureate and with her brother CORIN and her sister VANESSA as presenters at the NATIONAL ARTS CLUB, it was also substantive, with unforgettable remarks not only about Mr. Kline and his achievements but about the heritage his accomplishments illustrate. In this respect it called to mind a May 1999 *GIELGUD* presentation at Broadway's stately BARRYMORE THEATRE, where ZOE CALDWELL, who'd won the 1998 *GOLDEN QUILL* at the FOLGER SHAKESPEARE LIBRARY, led an eminent parade of theatrical celebrities – performers KEITH BAXTER, BRIAN BEDFORD, HAL HOLBROOK, RONALD PICKUP, CHRISTOPHER PLUMMER, and TOBY STEPHENS, playwright Sir DAVID HARE, director Sir RICHARD EYRE, *Masterpiece Theatre* producer REBECCA EATON, and news host ROBERT MACNEIL – in a sparkling *TRIBUTE TO "HER MAJESTY THE QUEEN,"* Dame JUDI DENCH, who had just received an Academy Award as Elizabeth I in *Shakespeare in Love* and was en route to a Tony as Esmé in David Hare's *Amy's View*.



A few months later Dame JUDI and another *GIELGUD* honoree, Sir DEREK JACOBI, were among the hosts for a January 2000 presentation of the trophy to actor, director, and filmmaker KENNETH BRANAGH in London's historic MIDDLE TEMPLE HALL. This Bardic *SALUTE TO "THE MAN OF THE MILLENNIUM"* featured vignettes by composer PATRICK DOYLE and actors SAMANTHA BOND, RICHARD BRIERS, HELENA BONHAM CARTER, BEN ELTON, STEPHEN FRY, BOB HOSKINS, GERALDINE MCEWAN, and TIMOTHY SPALL.

In recent years, through *SPEAKING OF SHAKESPEARE* programs in locales such as the BRITISH EMBASSY, the NATIONAL PRESS CLUB, and the WASHINGTON CLUB in America's capital, the CHICAGO SHAKESPEARE THEATER in Illinois, and the ALGONQUIN HOTEL and the NATIONAL ARTS CLUB in New York, our constituents have chatted with actors F. MURRAY ABRAHAM, JANE ALEXANDER, SIMON RUSSELL BEALE, RICHARD EASTON, HENRY GOODMAN, BILL IRWIN, MICHAEL LEARNED, ROGER REES, DAVID SABIN, MARIAN SELDES, PATRICK STEWART, and TED VAN GRIETHUYSEN, directors PETER BROOK, MICHAEL KAHN, and ROBERT WHITEHEAD, media leaders COKIE ROBERTS, SUSAN STAMBERG, and LINDA WERTHEIMER, and writers GEORGE GARRETT, ANTHONY HECHT, KEN LUDWIG, JUDITH MARTIN, DEBORAH TANNEN, and GARRY WILLS.

We invite you not only for the attractions enumerated in front but for other events to be announced soon for THE NATIONAL ARTS CLUB and elsewhere. Guild constituents at any level are entitled to member prices at *SPEAKING* engagements in various locations. In addition, those who affiliate with the Guild as SUBSCRIBERS receive 15% discounts on tickets for our April 19 *GIELGUD CENTENARY* gala in London. CONTRIBUTORS enjoy 20% discounts on *CENTENARY* tickets. DONORS save 25%, and BENEFACTORS 30%. PATRONS receive 4 prime tickets free, and 35% reductions on further tickets. SUSTAINERS receive 10 prime tickets free, and 40% reductions on additional tickets. Members of the *GOLDEN QUILL CIRCLE* enjoy 20 free prime tickets, and 50% reductions on additional tickets. For tax purposes, any portions of membership payments and ticket purchases that are not offset by benefits claimed and received are fully deductible.

I wish ___ to make a fully tax-deductible donation, or ___ to enroll as a Guild member for a year in the ___SUBSCRIBER (\$50), ___CONTRIBUTOR (\$125), ___DONOR (\$250), ___BENEFACTOR (\$500), ___PATRON (\$1,000), ___SUSTAINER (\$2,500), or ___GOLDEN QUILL CIRCLE (\$5,000) category. I'd like ___ space(s), ___ at \$30*, ___ at \$35, ___ at \$15 for March 15 in Washington. I'd like ___ space(s) at ___\$150, at ___\$110, at ___\$50, at ___\$40 for April 19** in London. I enclose a check to THE SHAKESPEARE GUILD for \$_____. Please charge \$_____ to American Express MasterCard Visa account _____ (____/____).

Name _____
Address _____
City, State, Zip _____
Phone, Fax, E-Mail _____
E-Mail _____

*I belong to _____, listed in front as a collaborating organization.
**I'm deducting _____% as a paid-up Guild member at the _____ level.



Presenter of THE GOLDEN QUILL

The Sir John Gielgud Award for Excellence in the Dramatic Arts

2141 WYOMING AVENUE NW, SUITE 41

John F. Andrews, President

WASHINGTON, D.C. 20008-3916

Phone & Fax (202) 234-4602 & 234-4639 E-Mail shakespeareguild@msn.com

Founded in 1987 and operational since 1994, The Shakespeare Guild is a global nonprofit corporation that celebrates, and endeavors to cultivate larger and more appreciative audiences for, the dramatist who has been applauded in one society after another as our most reliable guide to the mileposts of life.