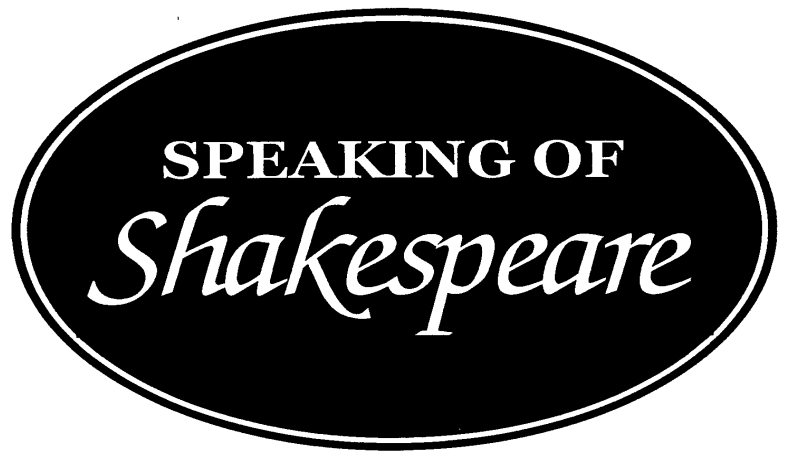


SALUTING THE CLASSICAL TRADITION IN DRAMA

A SEQUENCE OF PRESENTATIONS BY
The Shakespeare Guild
IN COLLABORATION WITH
The National Arts Club
The Corcoran Gallery of Art
The English-Speaking Union
The Royal Shakespeare Company
The Royal Academy of Dramatic Art



A GALA TRIBUTE TO SIR JOHN ♦ Monday, April 19

JUDI DENCH and PAUL SCOFIELD are only two of the stars you'll see if you help us commemorate the birthday centennial of a man who was widely regarded as the most influential dramatic artist of his era. Highlighting a period of festivities that will be co-sponsored by such institutions as the BBC, THE GARRICK CLUB, THE NATIONAL PORTRAIT GALLERY, THE NATIONAL THEATRE, THE ROYAL ACADEMY OF DRAMATIC ART, THE ROYAL SHAKESPEARE COMPANY, and THE THEATRE MUSEUM will be a sprightly revel in the West End venue that was renamed for Sir John in 1994. Hosted by media personality NED SHERRIN, this event will feature vignettes by CLIVE FRANCIS, PETER HALL, DAVID HARE, ROSEMARY HARRIS, MARTIN JARVIS, BARBARA JEFFORD, IAN MCKELLEN, MICHAEL PENNINGTON, IAN RICHARDSON, DONALD SINDEN, and other luminaries. To reserve tickets through the Guild, call (202) 234-4602. To order through the box office, call 011 44 870 890 1105.



THE GIELGUD THEATRE

Shaftesbury Avenue
London

Curtain 7:30 p.m.

PRIME SEATS \$150
OTHER SEATS \$40 TO \$110



DANA IVEY ♦ Thursday, May 20

DANA IVEY, who won an Obie Award when she created the title role in an Off-Broadway *Driving Miss Daisy* (1986-87), had received a previous Obie as Melanie in *Quartermaine's Terms* (1982-83). In 1984 she earned Tony nominations for two Broadway shows, *Heartbreak House* and *Sunday in the Park with George*. Ms. Ivey played Gertrude to Kevin Kline's Prince in a 1990 NEW YORK SHAKESPEARE FESTIVAL *Hamlet* that was telecast by PBS, and she recently portrayed Mistress Quickly, opposite Kline's Falstaff, in a superb *Henry IV* at LINCOLN CENTER. She earned plaudits as Congresswoman Libby Hauser in *Legally Blonde 2*. Her other film credits include *The Addams Family*, *The Color Purple*, *Dirty Rotten Scandals*, *Home Alone 2*, *The Impostors*, *The Kid*, and *Sabrina*. On TV she's appeared in *Easy Street*, *Frasier*, *Homicide*, and *A Lesson Before Dying*. She'll open soon in the KENNEDY CENTER revival of Tennessee Williams' *Cat on a Hot Tin Roof*.

CORCORAN GALLERY

500 17th Street NW
Washington

Program 7:30 p.m.

MEMBERS \$15, OTHERS \$20

CHRISTOPHER PLUMMER ♦ Monday, May 24

CHRISTOPHER PLUMMER is earning rave notices for a *King Lear* in which LINCOLN CENTER audiences are being reminded why he's often described as our continent's most distinguished classical actor. Best known, perhaps, for his indelible Captain von Trapp in *The Sound of Music*, Mr. Plummer has also delighted viewers in dozens of other cinematic and television triumphs, among them his parts in *The Insider* (1999) and *On Golden Pond* (2001). In 1997 he garnered a Tony for his riveting *Barrymore*, a legendary stage eminence with whom Mr. Plummer himself has frequently been compared. In addition to an Emmy and several Oscar nominations, Mr. Plummer has also been singled out for a cornucopia of additional honors, among them the highest accolade that Canada can bestow upon one of its native sons. He's graced all three of the globe's Stratfords with his unique talents, and he's performed with most of the leading actors and directors of the 20th century.

NATIONAL ARTS CLUB

15 Gramercy Park
New York City

Program 7:30 p.m.

MEMBERS \$25, OTHERS \$30

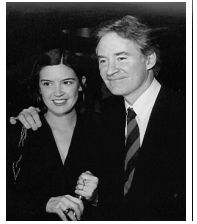




Savoring a Season to Remember

JOIN US IN WASHINGTON, NEW YORK, AND LONDON

If you attended *A SHAKESPEAREAN REVEL AT LINCOLN CENTER* two Junes back, you relished such personalities as actors JOHN CLEESE, KITTY CARLISLE HART, DANA IVEY, and TONY RANDALL, writer ADAM GOPNIK, and directors BARRY EDELSTEIN, BERNARD GERSTEN, and MARGOT HARLEY in a toast to KEVIN KLINE as the 2002 recipient of the *SIR JOHN GIELGUD AWARD FOR EXCELLENCE IN THE DRAMATIC ARTS*. In addition to the luminaries who appeared in person, several who couldn't be on hand for the event sent greetings, among them KENNETH BRANAGH, who recalled that he'd "had the great pleasure of acting with Mr. Kline on two occasions, once as a legless megalomaniac and once as a cartoon," and Sir DEREK JACOBI, who commended the awardee as a man who "lends a true grace to our profession with his very special gifts." One message came from a redoubtable producer who signed himself "Prince Hal – oops, HAL PRINCE."



It proved to be a joyous occasion, but like its predecessors, and like its sequel a year later with LYNN REDGRAVE as *GIELGUD* laureate and with her brother CORIN and her sister VANESSA as presenters at the NATIONAL ARTS CLUB, it was also substantive, with unforgettable remarks not only about Mr. Kline and his achievements but about the heritage his accomplishments illustrate. In this respect it called to mind a May 1999 *GIELGUD* presentation at Broadway's stately BARRYMORE THEATRE, where ZOE CALDWELL, who'd won the 1998 *GOLDEN QUILL* at the FOLGER SHAKESPEARE LIBRARY, led an eminent parade of theatrical celebrities – performers KEITH BAXTER, BRIAN BEDFORD, HAL HOLBROOK, RONALD PICKUP, CHRISTOPHER PLUMMER, and TOBY STEPHENS, playwright Sir DAVID HARE, director Sir RICHARD EYRE, *Masterpiece Theatre* producer REBECCA EATON, and news host ROBERT MACNEIL – in a sparkling *TRIBUTE TO "HER MAJESTY THE QUEEN,"* Dame JUDI DENCH, who had just received an Academy Award as Elizabeth I in *Shakespeare in Love* and was en route to a Tony as Esmé in David Hare's *Amy's View*.



A few months later Dame JUDI and another *GIELGUD* honoree, Sir DEREK JACOBI, were among the hosts for a January 2000 presentation of the trophy to actor, director, and filmmaker KENNETH BRANAGH in London's historic MIDDLE TEMPLE HALL. This Bardic *SALUTE TO "THE MAN OF THE MILLENNIUM"* featured vignettes by composer PATRICK DOYLE and actors SAMANTHA BOND, RICHARD BRIERS, HELENA BONHAM CARTER, BEN ELTON, STEPHEN FRY, BOB HOSKINS, GERALDINE MCEWAN, and TIMOTHY SPALL.

In recent years, through *SPEAKING OF SHAKESPEARE* programs in locales such as the BRITISH EMBASSY, the NATIONAL PRESS CLUB, and the WASHINGTON CLUB in America's capital, the CHICAGO SHAKESPEARE THEATER in Illinois, and the ALGONQUIN HOTEL and the NATIONAL ARTS CLUB in New York, our constituents have chatted with actors F. MURRAY ABRAHAM, JANE ALEXANDER, SIMON RUSSELL BEALE, RICHARD EASTON, HENRY GOODMAN, BILL IRWIN, MICHAEL LEARNED, ROGER REES, DAVID SABIN, MARIAN SELDES, PATRICK STEWART, and TED VAN GRIETHUYSEN, directors PETER BROOK, MICHAEL KAHN, and ROBERT WHITEHEAD, media leaders COKIE ROBERTS, SUSAN STAMBERG, and LINDA WERTHEIMER, and writers GEORGE GARRETT, ANTHONY HECHT, KEN LUDWIG, JUDITH MARTIN, DEBORAH TANNEN, and GARRY WILLS.

We invite you not only for the attractions enumerated in front but for other events to be announced in the near future. Guild constituents at any level are entitled to member prices at *SPEAKING* engagements in various locations. In addition, those who affiliate with the Guild as SUBSCRIBERS receive 15% discounts on tickets for our April 19 *GIELGUD CENTENARY* gala in London. CONTRIBUTORS enjoy 20% discounts on *CENTENARY* tickets. DONORS save 25%, and BENEFACTORS 30%. PATRONS receive 4 prime tickets free, and 35% reductions on further tickets. SUSTAINERS receive 10 prime tickets free, and 40% reductions on additional tickets. Members of the GOLDEN QUILL CIRCLE enjoy 20 free prime tickets, and 50% reductions on additional tickets. For tax purposes, any portions of membership payments and ticket purchases that are not offset by benefits claimed and received are fully deductible.

I wish ___ to make a fully tax-deductible donation, or ___ to enroll as a Guild member for a year in the ___ SUBSCRIBER (\$50), ___ CONTRIBUTOR (\$125), ___ DONOR (\$250), ___ BENEFACTOR (\$500), ___ PATRON (\$1,000), ___ SUSTAINER (\$2,500), or ___ GOLDEN QUILL CIRCLE (\$5,000) category. I'd like ___ space(s) at ___\$150, at ___\$110, at ___\$50, at ___\$40 for April 19** in London. I'd like ___ space(s) ___ at \$15*, ___ at \$20, ___ for May 17. I'd like ___ space(s) ___ at \$25*, ___ at \$30, ___ for May 24. I enclose a check for \$___. Please charge \$_____ to American Express MasterCard Visa account _____ (____/____).

Name _____
Address _____
City, State, Zip _____
Phone, Fax, E-Mail _____
E-Mail _____

*I belong to _____, listed in front as a collaborating organization.
**I'm deducting _____% as a paid-up Guild member at the _____ level.



Presenter of THE GOLDEN QUILL
The Sir John Gielgud Award for Excellence in the Dramatic Arts
2141 WYOMING AVENUE NW, SUITE 41 John F. Andrews, President
WASHINGTON, D.C. 20008-3916
Phone & Fax (202) 234-4602 & 234-4639 E-Mail shakesguild@msn.com

Founded in 1987 and operational since 1994, The Shakespeare Guild is a global nonprofit corporation that celebrates, and endeavors to cultivate larger and more appreciative audiences for, the dramatist who has been applauded in one society after another as our most reliable guide to the mileposts of life.