



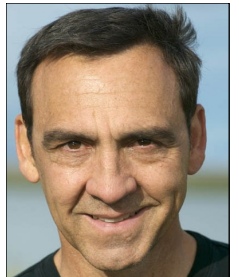
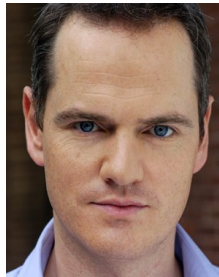
# Shakespeare At San Miguel

FRIDAY, FEBRUARY 24, AT 7:30 P.M.  
401 OLD SANTA FE TRAIL

Admission \$20  
Free for Students with IDs

*Songs and Sonnets by Shakespeare  
and his Contemporaries, Performed on  
Period Instruments by Noted Artists in a  
Chapel from the Poet's Own Lifetime*

Presented by  
**SEVERALL FRIENDS**  
*in association with the*  
**SHAKESPEARE GUILD**



This evocative program, drawing on poetry and songs by such Elizabethans as Thomas Campion, John Donne, John Dowland, and William Shakespeare, will feature four gifted performers. Countertenor RYLAND ANGEL, whose “delicious sound” has been praised by *Opera Magazine*, will be the principal vocalist. He’ll be accompanied by MARK RIMPLE, a lutenist and countertenor who has been lauded by the *Philadelphia Inquirer* and the *Chicago Tribune*. MARY SPRINGFELS, who has long performed with the Folger Consort in D.C. and the Newberry Library Consort in Chicago, will conduct the ensemble and play viola da gamba. And KENT KIRKPATRICK, who has worked on both stage and screen as director, writer, and actor, will recite a selection of lyrics. For detail on SEVERALL FRIENDS and its early-music offerings for the high desert, visit [www.severallfriends.org](http://www.severallfriends.org). For background on THE SHAKESPEARE GUILD, and for a link to an online form that will permit you to support and register for this event, visit [www.shakesguild.org](http://www.shakesguild.org).

# Help the Guild, & Support the Arts EVENTS IN D.C, LONDON, NEW YORK, AND SANTA FE

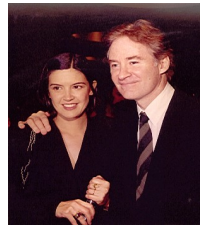


If you attended *A SHAKESPEAREAN REVEL AT LINCOLN CENTER* in 2002, you relished actors **John Cleese**, **Kitty Carlisle Hart**, **Dana Ivey**, and **Tony Randall**, writer **Adam Gopnik**, and directors **Bernard Gersten** and **Margot Harley** in a tribute to **KEVIN KLINE** as that year's recipient of the *GIELGUD AWARD FOR EXCELLENCE IN THE DRAMATIC ARTS*. It was a joyous gala,

but like its 2003 sequel with **LYNN REDGRAVE** as laureate and her brother **Corin** and her sister **Vanessa** as presenters at the **NATIONAL ARTS CLUB**, it was also substantive. In this respect it echoed a 1999 gala at Broadway's **BARRYMORE**



**THEATRE**, where **Zoe Caldwell**, who had received a 1998 *GIELGUD* at the **FOLGER SHAKESPEARE LIBRARY**, led a cavalcade of notables – actors **Keith Baxter**, **Brian Bedford**, **Hal Holbrook**, **Ronald Pickup**, **Christopher Plummer**, and **Toby Stephens**, dramatist **Sir David Hare**, director **Sir Richard Eyre**, *Masterpiece Theatre* producer **Rebecca Eaton**, and host **Robert MacNeil** – in a tribute to **DAME JUDI DENCH**. A few months later **Dame Judi** and another *GIELGUD* honoree, **Sir Derek Jacobi**, helped preside over a 2000 presentation to actor, director, and filmmaker **KENNETH BRANAGH** in London's historic **MIDDLE TEMPLE HALL**. This Bardic *SALUTE TO "THE*



*MAN OF THE MILLENNIUM"* featured remarks by U.S. Ambassador **Philip Lader**, composer **Patrick Doyle**, and actors **Samantha Bond**, **Richard Briers**, **Helena Bonham Carter**, **Richard Clifford**, **Ben Elton**, **Stephen Fry**, **Bob Hoskins**, **Geraldine McEwan**, and **Timothy Spall**.

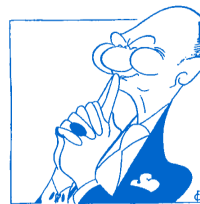
On April 19, 2004, in the London theatre that had been renamed for Sir John in 1994, shortly after the **SHAKESPEARE GUILD** unveiled a **John Safer** trophy to preserve the actor's legacy "with golden quill" (Sonnet 85), the **GUILD** collaborated with the **ROYAL SHAKESPEARE COMPANY** and the **ROYAL ACADEMY OF DRAMATIC ART** to celebrate the centenary of Sir John's birth. During a gala hosted by the **BBC's Ned Sherrin**, playwrights **Alan Bennett** and **Sir David Hare**, director **Sir Peter Hall**, and performers **Dame Judi Dench**, **Clive Francis**, **Rosemary Harris**, **Martin Jarvis**, **Barbara Jefford**, **Barbara Leigh-Hunt**, **Sir Ian McKellen**, **Michael Pennington**, **Ian Richardson**, **Paul Scofield**, and **Sir Donald Sinden** recalled their departed friend. On June 12, 2006, the **GUILD** returned to the **NATIONAL ARTS CLUB** for a salute to **CHRISTOPHER PLUMMER**, who was toasted by **Julie Andrews**, **Zoe Caldwell**, **Clive Francis**, **Robert MacNeil**, **Audra McDonald**, and **Lynn Redgrave**. A few months later, on May 21, 2007, the **GUILD** joined the **ENGLISH-SPEAKING UNION** at Washington's **BRITISH EMBASSY** for a reception at which **Sir David and Lady Manning**, Justice **Ruth Bader Ginsburg**, actors **Helen Carey** and **Ted van Griethuysen**, and others feted **MICHAEL KAHN**, artistic director of the **SHAKESPEARE THEATRE COMPANY**, for his service to the Nation's Capital. On March 10, 2008, Sir David's successor, **Sir Nigel Sheinwald**, joined actors **F. Murray Abraham**, **Kate Fleetwood**, **Whoopi Goldberg**, **Joel Grey**, and **Daniel Stewart**, pianist **Emanuel Ax**, director **David Jones**, and producer **Robert Halmi Jr.** at the **NAC** for a *GIELGUD* toast to **PATRICK STEWART**. On September 20, 2010, actors **Tom Hulce** and **Jerry Stiller**, producers **Robert Brustein**, **Fred Kaufman**, **Brian Kulick**, **Renzo Martinelli**, **Julian Schlossberg**, critic **James Shapiro**, and others at the **NAC** saluted **F. MURRAY ABRAHAM**. *GIELGUD* trophies are now bestowed during the annual **UK THEATRE AWARDS** luncheon in London's venerable **GUILDHALL**. The **GUILD** honored **SIR DONALD SINDEN** (posthumously) on October 19, 2014, **DAME EILEEN ATKINS** on October 18, 2015, and **VANESSA REDGRAVE CBE** on October 9, 2016.

We're now preparing a *Tempest*, to be directed by **Nigel Jackson**, that will be presented at the **SANTA FE BOTANICAL GARDEN** in August. Among other things, this production will remind viewers that Shakespeare was contemplating our "brave new world" at the same time that America's oldest capital city was being founded in 1610. For detail about this and other **GUILD** offerings, including a *SPEAKING OF SHAKESPEARE* series that commenced at the **NATIONAL PRESS CLUB** in Washington in 1998 and will soon complete its second decade at venues such as the **NATIONAL ARTS CLUB** in Manhattan, visit [www.shakesguild.org](http://www.shakesguild.org) and click on the blue links that guide you through our rich and eventful history of cultural programming. We also hope you'll click on our *Membership and Reservations* page and learn how to become more deeply involved in our endeavors. Many of them are admission-free, but of course none of them are cost-free.

Please reserve \_\_\_ space(s) for this special event at \$20. Please accept a tax-deductible donation of \$\_\_\_\_. to support this gathering. I understand that my gift will be gratefully acknowledged. Please enroll me as a **GUILD** member in the \_\_\_ **SUBSCRIBER** (\$50), \_\_\_ **CONTRIBUTOR** (\$100), \_\_\_ **DONOR** (\$250), \_\_\_ **BENEFACTOR** (\$500), \_\_\_ **PATRON** (\$1,000), \_\_\_ **SPONSOR** (\$5,000) category. Please accept my enclosed check for \$\_\_\_\_. Please charge \$\_\_\_\_\_ to \_\_\_**AMERICAN EXPRESS** \_\_\_**MASTERCARD** \_\_\_**VISA** account\_\_\_\_\_. (\_\_\_\_/\_\_\_\_) CVV\_\_\_\_\_.

Name \_\_\_\_\_  
Address \_\_\_\_\_  
City, State, Zip \_\_\_\_\_  
Phone, E-Mail \_\_\_\_\_

*The material in this form can be submitted online. It can also be transmitted by post, by email, or by telephone. GUILD contact details appear to the right.*



*Presenter of the GIELGUD AWARD FOR EXCELLENCE IN THE DRAMATIC ARTS  
Established in 1994 to Honor Sir John and to Perpetuate his Legacy*

14 VIA SAN MARTIN  
SANTA FE, NM 87506-7543  
Office 1-505-988-9560  
Mobile 1-505-670-9815

*JOHN F. ANDREWS, President*

[www.shakesguild.org](http://www.shakesguild.org)  
[shakesguild@msn.com](mailto:shakesguild@msn.com)

*Founded in 1987 and operational since 1994, The Shakespeare Guild is a global nonprofit corporation that celebrates, and endeavors to cultivate larger and more appreciative audiences for, the dramatist who has been applauded in one society after another as our most reliable guide to the mileposts of life.*