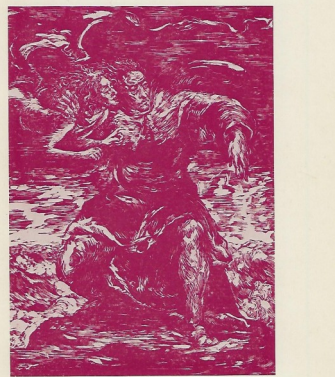


EXECUTIVE BOARD: John W. Achenbach, Werner Gundersheimer, Philip A. Knaebel, etc.

EDITORIAL BOARD: Anne Barton, Bernard Beckerman, David M. Bergeron, etc.

Subscription rates: Four Issues Only, Five Issues Only, All Six Issues. Includes postage and handling charges.



Cover illustration: Woodcut of Prospero and Ariel in The Tempest, V.1 by Hilde Schider-Foss. Reproduced here from the Folger art collection.

Spring 1985 VOLUME 36, NUMBER 1 Published by the Folger Shakespeare Library

ShakeScene

To Be Or Not To Be: The Folger Theatre

On 12 January 1985 the Trustees of Amherst College, who administer the Folger Shakespeare Library, announced that they had accepted the recommendations of an ad hoc Committee on the Long-Term Future of the Folger Theatre...

Dr. Gundersheimer emphasized that he and the Trustees had "not foreclosed any options with regard to theatre." In the months ahead, he remarked, "we shall be very much open to new ideas, examining them in the light of the best interests and fundamental needs of the Library as a whole."

that the Trustees had agreed to contribute \$300,000 to the theatre group over the next two years, but he also emphasized that the company would have to develop a base of individual support if it wished to remain at the library beyond that time.

Kennedy Center Forms New Resident Company In other Washington theatre news the John F. Kennedy Center for the Performing Arts has announced the formation of a new experimental troupe, the American National Theatre, under the direction of 27-year-old Peter Sellars...

Stratford Festival Canada Announces Plans for 1985-86 Stratford Festival Canada has appointed John Neville to succeed John Hirsch as artistic director beginning with the 1986 season.

The fifty participants were chosen from a pool of more than seven hundred applicants. They were a diverse group ranging in age from 24 to 74, and in different stages of teaching careers. They had been played out in a variety of school situations. They came from Plain Dealing, Louisiana, from Brooklyn, New York, from Bath, Maine, from Burbank, California, from Makawala, Hawaii, and from many places in between.

26-28 May with King Lear (directed by John Hirsch), Twelfth Night (directed by David Gales), and Measure for Measure (directed by Michael Hoffman). Principal players will include Douglas Campbell (Lear), Lewis Gordon ( Gloucester), Stana McKenna (Cordelia), Viola, Nicholas Penzell (the Fool, Malvolio, Angelo), James Blenkins (Kent, Sir Toby Belch), Edward Aizerza (Feste), Colin Fere (Osorio), Maria Ricossa (Regan, Olivia), Ann Scarfe (the Duke), and Barbara Mann (Isabella).

Alabama Shakespeare Company Announces Fellowships in Production and Management The Alabama Shakespeare Company, which will soon celebrate the opening of a new \$16-million theatre complex in Montgomery, has recently announced a fellowship program to assist would-be theatre professionals who would like to study theatre management and production in the setting of the festival's new 750-seat Festival Theatre for 1985-86.

Guthrie Theatre Announces 1985-86 Season Artistic Director Liviu Ciulei has announced an eight-play 1985-86 Guthrie Theatre season that will feature a month-long production of A Midsummer Night's Dream, a Shakespeare play (A Midsummer Night's Dream), a controversial modern drama (The Tempest), and the return of Guthrie director Stephen Kinzer, Emily Mann, and Andrei Serban.

exchange of ideas relating to all aspects of British Studies, including literature, history, art, music, and architecture. While the Symposium was held in the Southeast, participants are welcome from all parts of the country. The program committee invites proposals for individual papers, full sessions, and panel discussions. A \$100 prize will be awarded for the best paper from among those read at the Symposium and submitted to the evaluation committee by the following May.

Utah Shakespearean Festival To Offer Three Shakespeare Productions in 1985 The Utah Shakespearean Festival has announced a 11 July-31 August season that will feature The Merry Wives of Windsor, Antony and Cleopatra, and Twelfth Night. To accompany the plays the Festival will sponsor backstage tours, production seminars, literary seminars, and a variety of educational services.

Ashland Announces Ambitious 1985 Season The Oregon Shakespeare Festival will offer eleven plays in 1985, among them four by Shakespeare. One of the Shakespeare offerings will be King Lear in the indoor Angus Bowmer Theatre. The festival will also offer three other plays to follow in June: The Merchant of Venice, All's Well That Ends Well, and King John, all in the outdoor Elizabethan Stage.

Folger Library Opens Doors To Secondary School Teachers Forty junior high and high school teachers from around the country will descend upon the Folger Shakespeare Library during the summer of 1985 for four weeks of home, school, camp. These teachers will participate in Teaching Shakespeare 1985, a summer institute funded by the Division of Education Programs of the National Endowment for the Humanities.

Renaisance Drama Announces Topic for 1986 Volume XVII of Renaissance Drama will be devoted to the topic "Renaissance Drama and Cultural Change." The editors are seeking essays that explore the ways in which theatre forms contributed to the shaping of Renaissance culture. Manuscripts (including those of such anti-Stratfordians as the Oxfordians) the various editions of the text and the works that bear the name of Shakespeare. Just what the