

SAVORING THE CLASSICAL TRADITION IN DRAMA

ENGAGING PRESENTATIONS BY
THE SHAKESPEARE GUILD

IN COLLABORATION WITH

THE NATIONAL ARTS CLUB
THE WNDC IN WASHINGTON
THE ENGLISH-SPEAKING UNION



JOANNA READ ♦ Friday, October 6



As we open our 2017-18 season of SOS engagements, we're delighted to do so with an influential leader of the British theatre establishment. **JOANNA READ** is the first woman to serve as Principal of the **London Academy of Music and Dramatic Art**. Before she arrived at LAMDA in 2010, Ms. Read distinguished herself as a director and librettist at several other institutions, among them the **Birmingham Repertory Theatre**, the **Edinburgh Festival Theatre**, the **Salisbury Playhouse**, and the **Young Vic**. She has directed Arthur Miller's *Playing for Time*, William Nicholson's *Shadowlands*, and Howard Goodall and Melvyn Bragg's *The Hired Man*, with such actors as Julian Glover



NATIONAL ARTS CLUB
15 Gramercy Park South
Manhattan
PROGRAM 8:00 P.M.
Admission Free, But
Reservations Requested

and Joanna Riding in powerful roles, and she has orchestrated a major expansion of LAMDA's facilities and programs, drawing on enthusiastic support from such dedicated alumni as Jim Broadbent, Brian Cox, Benedict Cumberbatch, and Chiwetel Ejiofor.

PETER MARKS ♦ Wednesday, October 18

After nine years with the *New York Times*, in 2002 **PETER MARKS** joined the *Washington Post* as chief theater critic. In that role he covers everything from **Kennedy Center Honors** galas to performances in such vibrant settings as **Arena Stage** (which launched *Dear Evan Hansen* on its journey to a Tony Award), the **Folger Theatre** (which attracts gifted directors such as Aaron Posner and garners frequent Helen Hayes Awards), **Ford's Theatre** (which still plays host to Presidents), the **Shakespeare Theatre Company** (which Michael Kahn has built into a major artistic ensemble), and **Signature Theatre** (which is headed by Eric Schaeffer, a leading interpreter



of Sondheim musicals). Meanwhile, with the *Post's* growing online presence, Mr. Marks has solidified his standing as a nationally recognized critic whose articles, profiles, and commentary explore key trends in New York, London, and other prominent centers.

NATIONAL ARTS CLUB
15 Gramercy Park South
Manhattan
PROGRAM 8:00 P.M.
Admission Free, But
Reservations Requested

STEPHEN SEGALLER ♦ Monday, November 6

STEPHEN SEGALLER oversees all of WNET's national programming, a portfolio that includes *American Masters*, *Great Performances*, *Nature*, and *PBS NewsHour Weekend*. As Executive Producer, he has brought us such documentaries as *Ascent of Money* and *The War of the World*, both with Niall Ferguson, and *City at War: London Calling* and *Legacy of War*, narrated by Walter Cronkite. In partnership with the BBC's *Richard Denton*, he's now enriching our lives with *SHAKESPEARE UNCOVERED*, each episode of which features a guide who focuses on one play. He'll share highlights from such programs as *Antony and Cleopatra* (Kim Cattrall), *King Lear* (Christopher



NATIONAL ARTS CLUB
15 Gramercy Park South
Manhattan
PROGRAM 8:00 P.M.
Admission Free, But
Reservations Requested



Plummer), *A Midsummer Night's Dream* (Hugh Bonneville), *Romeo and Juliet* (Joseph Fiennes), *The Taming of the Shrew* (Morgan Freeman), and *The Merchant of Venice* (F. Murray Abraham). He may also bring a special guest or two to the event.



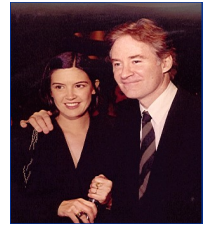
Help the Guild, & Support the Arts EVENTS IN D.C, LONDON, NEW YORK, AND SANTA FE

If you attended *A SHAKESPEAREAN REVEL AT LINCOLN CENTER* in 2002, you relished actors **John Cleese**, **Kitty Carlisle Hart**, **Dana Ivey**, and **Tony Randall**, writer **Adam Gopnik**, and directors **Bernard Gersten** and **Margot Harley** in a tribute to **KEVIN KLINE** as that year's recipient of the *GIELGUD AWARD FOR EXCELLENCE IN THE DRAMATIC ARTS*. It was a joyous gala,

but like its 2003 sequel with **LYNN REDGRAVE** as laureate and her brother **Corin** and her sister **Vanessa** as presenters at the **NATIONAL ARTS CLUB**, it was also substantive. In this respect it echoed a 1999 gala at Broadway's **BARRYMORE**



THEATRE, where **Zoe Caldwell**, who had received a 1998 *GIELGUD* at the **FOLGER SHAKESPEARE LIBRARY**, led a cavalcade of notables – actors **Keith Baxter**, **Brian Bedford**, **Hal Holbrook**, **Ronald Pickup**, **Christopher Plummer**, and **Toby Stephens**, dramatist **Sir David Hare**, director **Sir Richard Eyre**, *Masterpiece Theatre* producer **Rebecca**



Eaton, and host **Robert MacNeil** – in a tribute to **DAME JUDI DENCH**. A few months later **Dame Judi** and another *GIELGUD* honoree, **Sir Derek Jacobi**, helped preside over a 2000 presentation to actor, director, and filmmaker **KENNETH BRANAGH** in London's historic **MIDDLE TEMPLE HALL**. This Bardic *SALUTE TO "THE*

MAN OF THE MILLENNIUM" featured remarks by U.S. Ambassador **Philip Lader**, composer **Patrick Doyle**, and actors **Samantha Bond**, **Richard Briers**, **Helena Bonham Carter**, **Richard Clifford**, **Ben Elton**, **Stephen Fry**, **Bob Hoskins**, **Geraldine McEwan**, and **Timothy Spall**.

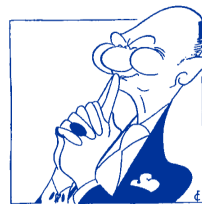
On April 19, 2004, in the London theatre that had been renamed for Sir John in 1994, shortly after the **SHAKESPEARE GUILD** unveiled a **John Safer** trophy to preserve the actor's legacy "with golden quill" (Sonnet 85), the **GUILD** collaborated with the **ROYAL SHAKESPEARE COMPANY** and the **ROYAL ACADEMY OF DRAMATIC ART** to celebrate the centenary of Sir John's birth. During a gala hosted by the **BBC's Ned Sherrin**, playwrights **Alan Bennett** and **Sir David Hare**, director **Sir Peter Hall**, and performers **Dame Judi Dench**, **Clive Francis**, **Rosemary Harris**, **Martin Jarvis**, **Barbara Jefford**, **Barbara Leigh-Hunt**, **Sir Ian McKellen**, **Michael Pennington**, **Ian Richardson**, **Paul Scofield**, and **Sir Donald Sinden** recalled their departed friend. On June 12, 2006, the **GUILD** returned to the **NATIONAL ARTS CLUB** for a salute to **CHRISTOPHER PLUMMER**, who was toasted by **Julie Andrews**, **Zoe Caldwell**, **Clive Francis**, **Robert MacNeil**, **Audra McDonald**, and **Lynn Redgrave**. A few months later, on May 21, 2007, the **GUILD** joined the **ENGLISH-SPEAKING UNION** at Washington's **BRITISH EMBASSY** for a reception at which **Sir David and Lady Manning**, **Justice Ruth Bader Ginsburg**, actors **Helen Carey** and **Ted van Griethuysen**, and others feted **MICHAEL KAHN**, artistic director of the **SHAKESPEARE THEATRE COMPANY**, for his service to the Nation's Capital. On March 10, 2008, Sir David's successor, **Sir Nigel Sheinwald**, joined actors **F. Murray Abraham**, **Kate Fleetwood**, **Whoopi Goldberg**, and **Joel Grey**, pianist **Emanuel Ax**, director **David Jones**, and producer **Robert Halmi Jr.** at the **NAC** for a *GIELGUD* tribute to **PATRICK STEWART**. On September 20, 2010, actors **Tom Hulce** and **Jerry Stiller**, producer **Robert Brustein**, and others saluted **F. MURRAY ABRAHAM** at the **NAC**. *GIELGUD* trophies are now bestowed during the annual **UK THEATRE AWARDS** luncheon in London's venerable **GUILDHALL**. The **GUILD** honored **SIR DONALD SINDEN** (posthumously) on October 19, 2014, **DAME EILEEN ATKINS** on October 18, 2015, and **VANESSA REDGRAVE CBE** on October 9, 2016. This year's *Gielgud*-inscribed **Clive Francis** trophy will be presented to playwright **DAVID HARE** on Sunday, October 15.

For detail about these and other **GUILD** offerings, including a *SPEAKING OF SHAKESPEARE* series that commenced at the **NATIONAL PRESS CLUB** in 1998 and will soon complete its second decade, we hope you'll visit www.shakesguild.org and click on the blue links that guide you through our rich and eventful history of cultural programming. We also hope you'll click on our *Membership and Reservations* page and become more deeply involved in our endeavors. By design, most of our attractions are admission-free. But that does not mean they're cost-free. Like the schools, colleges, libraries, museums, and other not-for-profit institutions that we all help with donations and membership affiliations, the **GUILD** is in constant need of support from those who cherish its efforts to preserve an incomparable artistic and intellectual heritage. Bear in mind, too, that any contributions that are not offset by benefits claimed are fully tax-deductible.

I wish to make a tax-deductible donation of \$____. Please enroll me as a **GUILD** member in the __ **SUBSCRIBER** (\$50), __ **CONTRIBUTOR** (\$100), __ **DONOR** (\$250), __ **BENEFACTOR** (\$500), __ **PATRON** (\$1,000), __ **SPONSOR** (\$5,000) category. Please reserve __ space(s) at no charge for October 6, __ space(s) at no charge for October 18; __ space(s) at no charge for November 6. Please accept my enclosed check for \$____. Please charge \$____ to __ **AMERICAN EXPRESS** __ **MASTERCARD** __ **VISA** account number _____ (____/____) **CVV** _____.

Name _____
Address _____
City, State, Zip _____
Phone, E-Mail _____

*The material in this form can be submitted online. It can also be transmitted by post, by email, or by telephone. **GUILD** contact details appear to the right.*



*Presenter of the **GIELGUD AWARD FOR EXCELLENCE IN THE DRAMATIC ARTS**
Established in 1994 to Honor Sir John and to Perpetuate his Legacy*

**14 VIA SAN MARTIN
SANTA FE, NM 87506-7543
Office 1-505-988-9560
Mobile 1-505-670-9815**

JOHN F. ANDREWS, President

www.shakesguild.org
shakesguild@msn.com

Founded in 1987 and operational since 1994, The Shakespeare Guild is a global nonprofit corporation that celebrates, and endeavors to cultivate larger and more appreciative audiences for, the dramatist who has been applauded in one society after another as our most reliable guide to the mileposts of life.