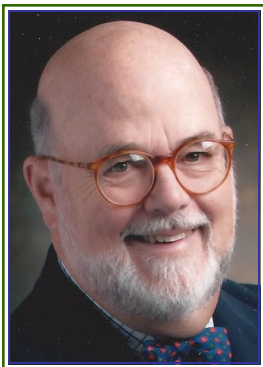


SAVORING THE CLASSICAL TRADITION IN DRAMA

ENGAGING PRESENTATIONS BY
THE SHAKESPEARE GUILD

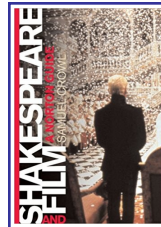
IN COLLABORATION WITH
THE NATIONAL ARTS CLUB
THE WNDC IN WASHINGTON
THE ENGLISH-SPEAKING UNION

SPEAKING OF Shakespeare



SAMUEL CROWL ♦ Wednesday, April 26

In 1980, when SAMUEL CROWL of Ohio University published a seminal article in *Shakespeare Quarterly* about *Chimes at Midnight*, a 1966 adaptation of *Henry IV, Parts 1 and 2* in which producer Orson Welles played Falstaff, this film (which featured Sir John Gielgud as the King and Keith Baxter as the Prince) was considered a failure. It's now regarded as a classic, and Professor Crowl is recognized as a leading authority on performance history. His many books include *Shakespeare Observed* (1992), *Shakespeare at the Cineplex: The Kenneth Branagh Era* (2002), *Shakespeare and Film: A Norton Guide* (2008), and *Screen Adaptations: HAMLET* (2014).



NATIONAL ARTS CLUB
15 Gramercy Park South
Manhattan
PROGRAM 6:30 P.M.
Admission Free, But
Reservations Requested

He is also represented in collections like *Teaching Shakespeare Today* (1993), *The Cambridge Companion to Shakespeare on Film* (2000), and *Shakespeare: Critical Theory and Popular Cinema* (2001). He'll discuss his work with the GUILD's John Andrews.

KARIN COONROD ♦ Thursday, April 27

In July of 2016 director KARIN COONROD, who has been lauded by Ben Brantley as "a theater artist of far-reaching inventiveness," mounted a historic, bilingual *Merchant of Venice* in the original Ghetto, a setting whose 500th anniversary was commemorated last March in a *New York Times* feature story. The *Times* returned to *La Serenissima* for the show's gala opening, as well as for a symposium at which F. Murray Abraham recited Shylock's "Hath not a Jew eyes" speech and Justice Ruth Bader Ginsburg presided over a debate that featured Harvard's Stephen Greenblatt and Columbia's James Shapiro. A few days later, as part of its *SHAKESPEARE 400* festivities



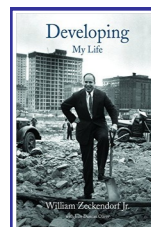
in London, the International Shakespeare Association devoted a special session to the production. It continues to resonate, and Ms. Coonrod will join us for a follow-up conversation with John Andrews that will also include other participants in the event.

ENGLISH-SPEAKING UNION
144 East 39th Street
Manhattan
PROGRAM 6:00 P.M.
Admission Free, But
Reservations Requested



NANCY ZECKENDORF ♦ Thursday, May 25

NANCY ZECKENDORF is a cultural leader who began her career as a principal dancer, appearing on TV as well as on Broadway and earning plaudits with such prestigious companies as the Metropolitan Opera Ballet and the Santa Fe Opera. She devoted three decades to the American Ballet Theatre, serving as Gala Chair and chief fundraiser. But she is best known for what she and developer William Zeckendorf Jr. have done for the locales that have benefited most from their philanthropy and civic vision. Anyone familiar with Union Square is aware of the impact that Zeckendorf Towers has had on its vibrant neighborhood. And those who visit or reside in Santa Fe



NATIONAL ARTS CLUB
15 Gramercy Park South
Manhattan
PROGRAM 6:00 P.M.
Admission Free, But
Reservations Requested

are grateful for such treasures as the Lensic Performing Arts Center. As a tribute to her late husband, Mrs. Zeckendorf has just published *Developing: My Life*, his beautifully illustrated memoir, and she'll talk about what made him and his work so special.



Help the Guild, & Support the Arts EVENTS IN D.C, LONDON, NEW YORK, AND SANTA FE

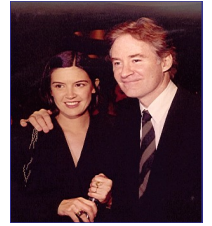


If you attended *A SHAKESPEAREAN REVEL AT LINCOLN CENTER* in 2002, you relished actors **John Cleese**, **Kitty Carlisle Hart**, **Dana Ivey**, and **Tony Randall**, writer **Adam Gopnik**, and directors **Bernard Gersten** and **Margot Harley** in a tribute to **KEVIN KLINE** as that year's recipient of the **GIELGUD AWARD FOR EXCELLENCE IN THE DRAMATIC ARTS**. It was a joyous gala,

but like its 2003 sequel with **LYNN REDGRAVE** as laureate and her brother **Corin** and her sister **Vanessa** as presenters at the **NATIONAL ARTS CLUB**, it was also substantive. In this respect it echoed a 1999 gala at Broadway's **BARRYMORE**



THEATRE, where **Zoe Caldwell**, who had received a 1998 **GIELGUD** at the **FOLGER SHAKESPEARE LIBRARY**, led a cavalcade of notables – actors **Keith Baxter**, **Brian Bedford**, **Hal Holbrook**, **Ronald Pickup**, **Christopher Plummer**, and **Toby Stephens**, dramatist **Sir David Hare**, director **Sir Richard Eyre**, *Masterpiece Theatre* producer **Rebecca**



Eaton, and host **Robert MacNeil** – in a tribute to **DAME JUDI DENCH**. A few months later another **GIELGUD** honoree, **Sir Derek Jacobi**, helped preside over a 2000 presentation to actor, director, and filmmaker **KENNETH BRANAGH** in London's historic **MIDDLE TEMPLE HALL**. This Bardic **SALUTE TO "THE**

MAN OF THE MILLENNIUM" featured remarks by U.S. Ambassador **Philip Lader**, composer **Patrick Doyle**, and actors **Samantha Bond**, **Richard Briers**, **Helena Bonham Carter**, **Richard Clifford**, **Ben Elton**, **Stephen Fry**, **Bob Hoskins**, **Geraldine McEwan**, and **Timothy Spall**.

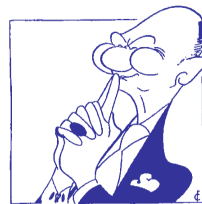
On April 19, 2004, in the London theatre that had been renamed for Sir John in 1994, shortly after the **SHAKESPEARE GUILD** unveiled a **John Safer** trophy to preserve the actor's legacy "with golden quill" (Sonnet 85), the **GUILD** collaborated with the **ROYAL SHAKESPEARE COMPANY** and the **ROYAL ACADEMY OF DRAMATIC ART** to celebrate the centenary of Sir John's birth. During a gala hosted by the **BBC's Ned Sherrin**, playwrights **Alan Bennett** and **Sir David Hare**, director **Sir Peter Hall**, and performers **Dame Judi Dench**, **Clive Francis**, **Rosemary Harris**, **Martin Jarvis**, **Barbara Jefford**, **Barbara Leigh-Hunt**, **Sir Ian McKellen**, **Michael Pennington**, **Ian Richardson**, **Paul Scofield**, and **Sir Donald Sinden** recalled their departed friend. On June 12, 2006, the **GUILD** returned to the **NATIONAL ARTS CLUB** for a salute to **CHRISTOPHER PLUMMER**, who was toasted by **Julie Andrews**, **Zoe Caldwell**, **Clive Francis**, **Robert MacNeil**, **Audra McDonald**, and **Lynn Redgrave**. A few months later, on May 21, 2007, the **GUILD** joined the **ENGLISH-SPEAKING UNION** at Washington's **BRITISH EMBASSY** for a reception at which **Sir David and Lady Manning**, Justice **Ruth Bader Ginsburg**, actors **Helen Carey** and **Ted van Griethuysen**, and others feted **MICHAEL KAHN**, artistic director of the **SHAKESPEARE THEATRE COMPANY**, for his service to the Nation's Capital. On March 10, 2008, Sir David's successor, **Sir Nigel Sheinwald**, joined actors **F. Murray Abraham**, **Kate Fleetwood**, **Whoopi Goldberg**, **Joel Grey**, and **Daniel Stewart**, pianist **Emanuel Ax**, director **David Jones**, and producer **Robert Halmi Jr.** at the **NAC** for a **GIELGUD** toast to **PATRICK STEWART**. On September 20, 2010, actors **Tom Hulce** and **Jerry Stiller**, producers **Robert Brustein**, **Fred Kaufman**, **Brian Kulick**, **Renzo Martinelli**, **Julian Schlossberg**, critic **James Shapiro**, and others at the **NAC** saluted **F. MURRAY ABRAHAM**. **GIELGUD** trophies are now bestowed during the annual **UK THEATRE AWARDS** luncheon in London's venerable **GUILDHALL**. The **GUILD** honored **SIR DONALD SINDEN** (posthumously) on October 19, 2014, **DAME EILEEN ATKINS** on October 18, 2015, and **VANESSA REDGRAVE CBE** on October 9, 2016.

For detail about these and other **GUILD** offerings, including a **SPEAKING OF SHAKESPEARE** series that commenced at the **NATIONAL PRESS CLUB** in 1998 will soon complete its second decade, we hope you'll visit www.shakesguild.org and click on the blue links that guide you through our rich and eventful history of cultural programming. We also hope you'll click on our **Membership and Reservations** page and become more deeply involved in our endeavors. By design most of our attractions are admission-free. But that does not mean they're cost-free. Like the schools, colleges, libraries, museums, and other not-for-profit institutions that we all help with donations and membership affiliations, the **GUILD** is in constant need of support from those who cherish its efforts to preserve an incomparable artistic and intellectual heritage. Bear in mind, too, that any contributions that are not offset by benefits claimed are fully tax-deductible.

I wish to make a tax-deductible donation of \$____. Please enroll me as a **GUILD** member in the __ **SUBSCRIBER** (\$50), __ **CONTRIBUTOR** (\$100), __ **DONOR** (\$250), __ **BENEFACTOR** (\$500), __ **PATRON** (\$1,000), __ **SPONSOR** (\$5,000) category. Please reserve __ space(s) at no charge for April 26; __ space(s) at no charge for April 27; __ space(s) at no charge for May 25. Please accept my enclosed check for \$____. Please charge \$____ to __ **AMERICAN EXPRESS** __ **MASTERCARD** __ **VISA** account number _____ (____/____) CVV _____.

Name _____
Address _____
City, State, Zip _____
Phone, E-Mail _____

The material in this form can be submitted online. It can also be transmitted by post, by email, or by telephone. **GUILD** contact details appear to the right.



Presenter of the **GIELGUD AWARD FOR EXCELLENCE IN THE DRAMATIC ARTS**
Established in 1994 to Honor Sir John and to Perpetuate his Legacy

14 Via San Martin
Santa Fe, NM 87506-7543
Office 1-505-988-9560
Mobile 1-505-670-9815

JOHN F. ANDREWS, President

www.shakesguild.org
shakesguild@msn.com

Founded in 1987 and operational since 1994, The Shakespeare Guild is a global nonprofit corporation that celebrates, and endeavors to cultivate larger and more appreciative audiences for, the dramatist who has been applauded in one society after another as our most reliable guide to the mileposts of life.